

Current Initiatives in Sustainable Communities Planning

APA Pennsylvania Chapter Annual Conference
October 18, 2011

1. Federal Partnership for Sustainable Communities, APA Sustaining Places
David Rouse, AICP
2. ICLEI Star Community Index
Andrea Lytle Peet, AICP
3. Sustainability in Cranberry Township
John Trant Jr., AICP

Two National Initiatives:

partnership for
Sustainable Communities
an interagency partnership HUD • DOT • EPA

**APA SUSTAINING
PLACES**



partnership for
Sustainable Communities
an interagency partnership HUD • DOT • EPA

The Sustainable Communities Planning Grant Program is part of the federal Partnership for Sustainable Communities, which brings HUD, DOT and the EPA together to ensure that the agencies' policies, programs, and funding consider affordable housing, transportation, and environmental protection together.



Livability Principles

- 1. Provide more transportation choices.**
- 2. Promote equitable, affordable housing.**
- 3. Enhance economic competitiveness.**
- 4. Support existing communities.**
- 5. Coordinate and leverage federal policies & investment.**
- 6. Value communities and neighborhoods.**

2010 Consolidated Appropriations Act

- \$98,000,000 Sustainable Communities Regional Planning Grants

2010 Notice of Funding Available from HUD

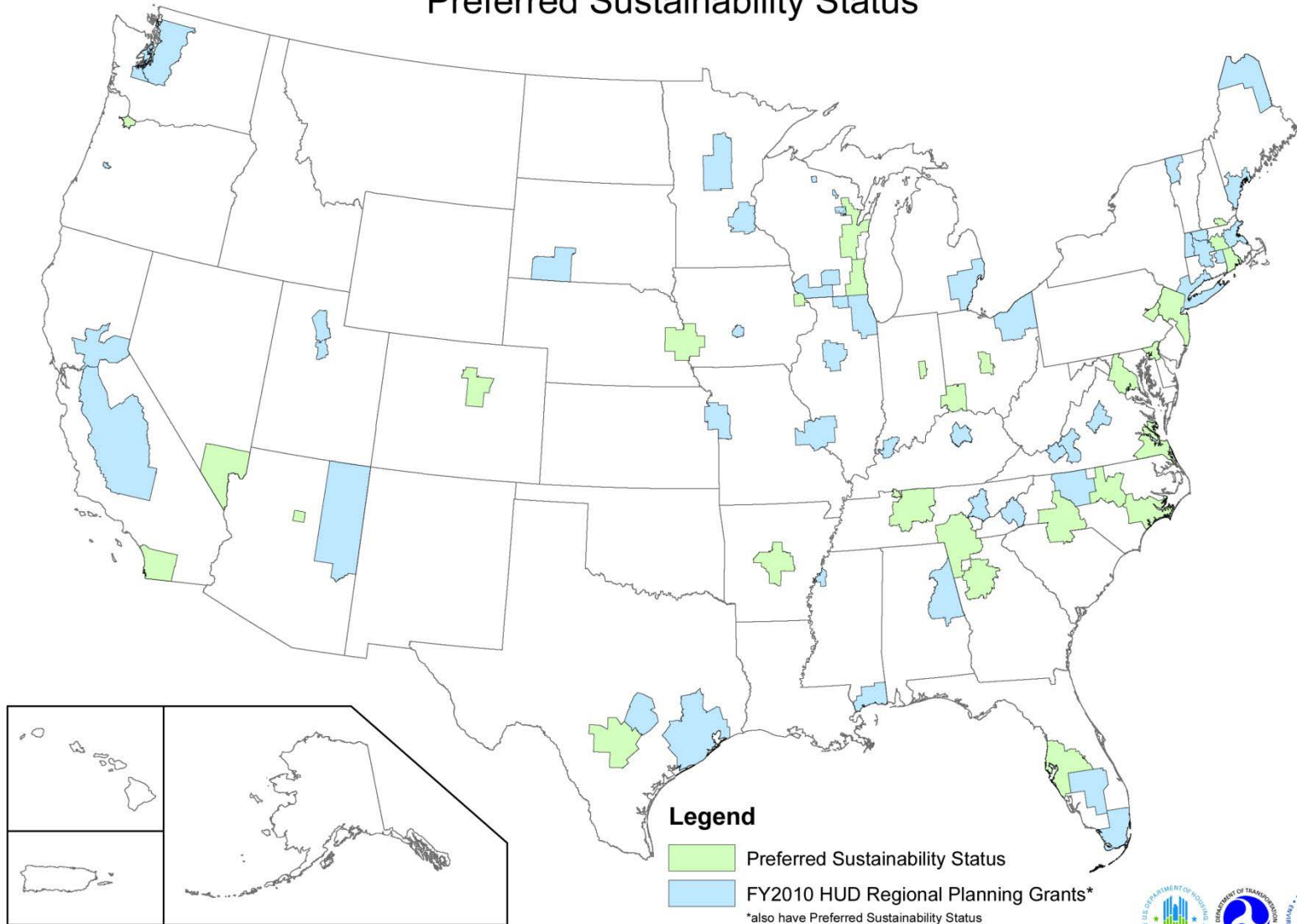
- NOFA issued June 23, 2010
- 225 submissions / 177 complete applications reviewed by HUD
- 45 Awards announced October 14, 2010

Applications from Pennsylvania

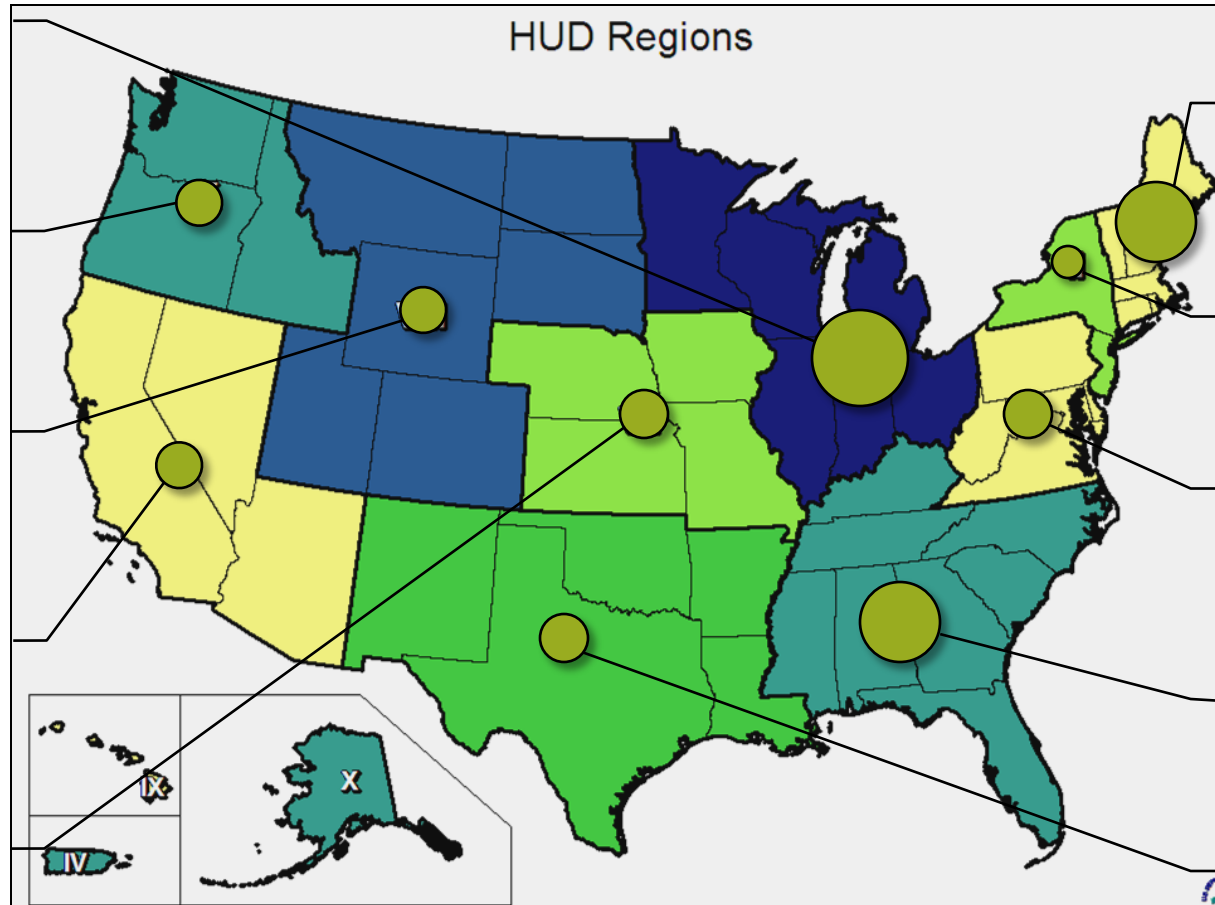
1. Lehigh Valley Economic Development Corporation, Bethlehem*
2. Southwestern Pennsylvania Corporation, Pittsburgh
3. County of Berks
4. Sewickley Borough
5. Delaware Valley Regional Planning Commission, Philadelphia

* Preferred Sustainability Status

Sustainable Communities Regional Planning Grants Preferred Sustainability Status



Regional Planning Grants



Sustainable Community Challenge Grant Program

- Created to help support local planning to integrate housing, employment, and public transportation
- FY 2010: \$75 million in combined HUD/ DOT TIGER II funding available
- 1st Awards announced by HUD in October of 2010

2010 Grants

- \$67.6 million awarded to 62 communities – typically BIG grants
- About 10% of applicants received grants
- HUD Identified \$1.28 billion in demand for the program

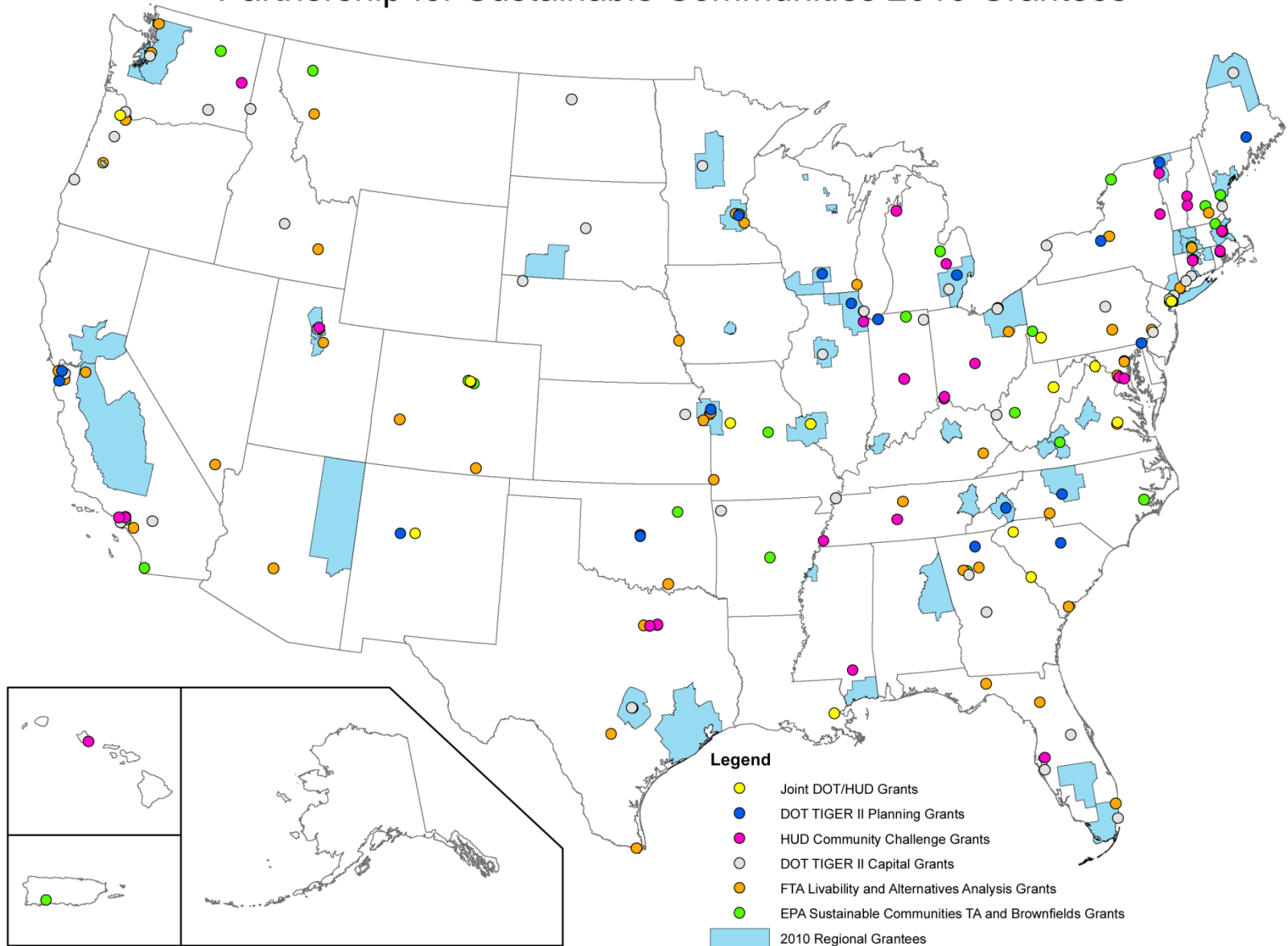
Pennsylvania Applications

- Union County
- SEDA Council of Governments
- City of Bethlehem
- City of Erie
- City of Johnstown
- City of Lancaster
- Chester County
- Cranberry Township
- City of Kimberton
- Lehigh Valley Planning Commission
- City of Reading
- Cheltenham Township
- Lower Merion Township
- Erie Western PA Port Authority
- Lehigh Valley Econ. Dev. Corp.
- Westmoreland Econ. Dev Initiative

Pennsylvania Grant Award:

Pittsburgh: Allegheny Riverfront Green Boulevard Plan \$1,500,000

Partnership for Sustainable Communities 2010 Grantees



CATEGORY 1: Regional Plan for Sustainable Development



Knoxville Regional Consortium

CATEGORY 2: Detailed Implementation Plan



Capital Area Texas Sustainable Consortium

2010 Regional Planning Grants
Two Examples



PlanET HUD Category 1 Regional Plan for Sustainable Development

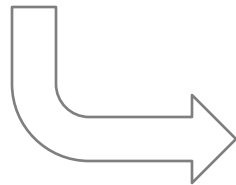
KNOXVILLE REGION

- 1,900 Square Miles in Appalachia
- 680,444 People
- Key Issues: Air & Water Quality, Economic Opportunity, and Community Health
- Limited Transportation Opportunities



- Broad Consortium of Public & Private Stakeholders
- \$4.3 Million HUD Category 1 Grant

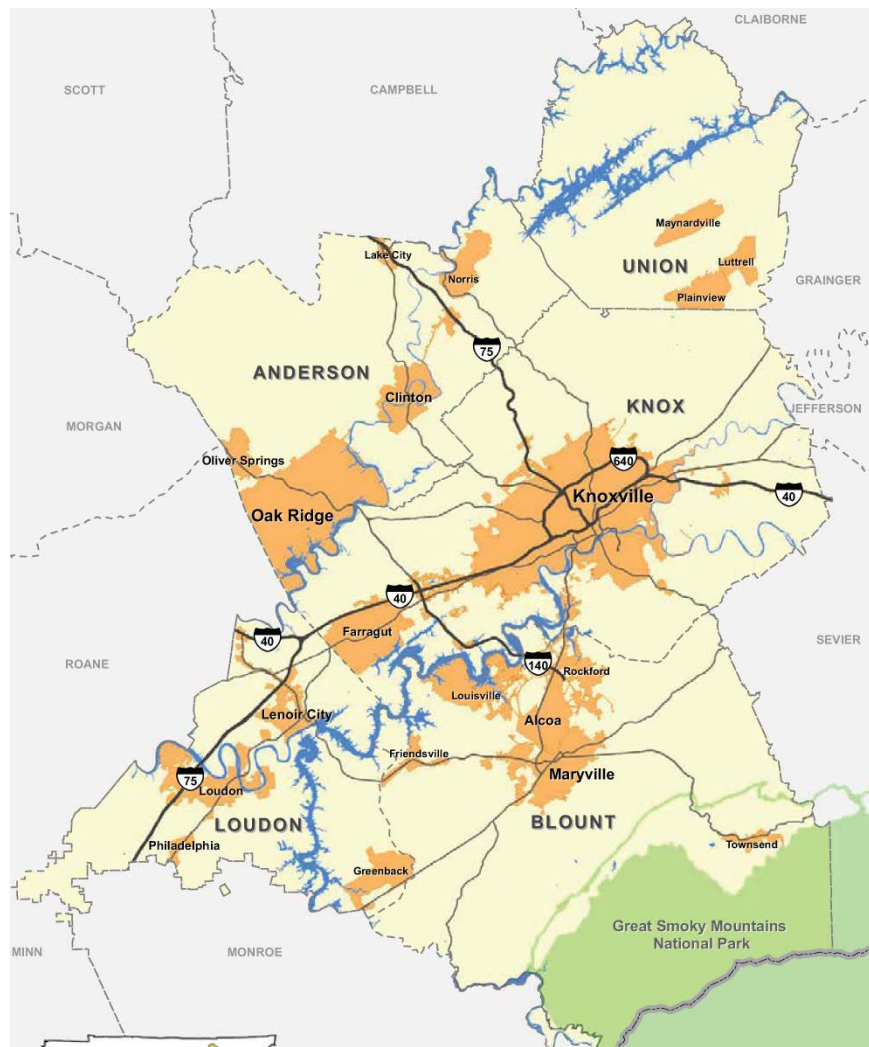
GRANT APPLICATION



PLAN

- Engage the Community
- Increase Local Capacity
- Develop a Blueprint for the Region's Future

PlanET HUD Category 1 Regional Plan for Sustainable Development



Goals for the Process

- Capacity Building
- Community Engagement
- Developing a Blueprint for the Region's Future

“This three-year effort will develop a community-driven roadmap to help shape where we will live, where we will work and how we will get there.”



HUD Category 2 Detailed Implementation Plan

Capital Area Texas Sustainable Consortium (CATS)

Steering Committee:

- CAMPO
- CAPCOG
- Envision Central Texas
- CARTS
- Cap Metro
- City of Austin
- City of Round Rock
- City of San Marcos

Based on Adopted 2035 Plan

- Envision Central Texas
- Long Range Transportation Plan
- Focus on Activity Centers

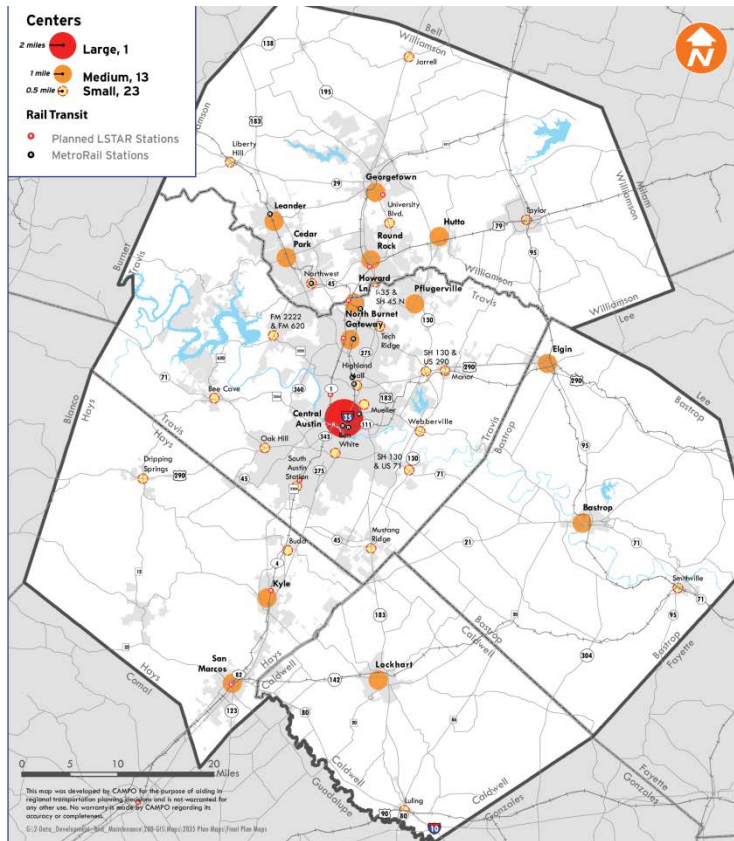
Work Plan

- Analytics Tool Development
- Demonstration Site Selection
- Outreach Strategy

HUD Category 2 Detailed Implementation Plan

Analytics Tool Development

- Collaboration between IBM and University of Texas
- Designed to assess economic impact of different planning approaches



Demonstration Sites

- Currently selecting locations through application process
- Identified Activity Centers in the 2035 Plan

2011 Sustainable Communities Planning Appropriations

- \$100 million total (reduced from \$150 million in 2010)
 - \$67,000,000 Regional Planning Grants
 - \$28,000,000 Community Challenge Grants

Regional Planning Grants

- Advance Notice Issued June 20, 2011
- NOFA Opened July 27, 2011
- Pre-Applications Due August 25, 2011
- 189 Regions Deemed Eligible (13 from PA)
- Final Applications Were Due October 6, 2011

Pennsylvania 2011 Applicants Eligible to Apply

- Blair County Planning Commission/Altoona
- Indiana
- City of Harrisburg
- Berks County/Reading*
- Erie County
- York County
- Delaware Valley Regional Planning Commission/Philadelphia*
- Lawrence County/New Castle
- Lehigh Valley Economic Development Corp/Bethlehem*
- North Central Pennsylvania Regional Planning & Development
- Northern Tier Regional Planning & Development Commission/Towanda
- Southwestern Pennsylvania Commission/Pittsburgh*
- Tri-County Regional Planning Commission/Harrisburg

* 2010 Applicant

What's Next for Sustainable Communities?

- House 2012 budget proposal: “de-fund” Partnership
- Senate 2012 budget proposal: \$90 million for Regional Planning and Community Challenge Grants (10% reduction)

2012 Presidential / Congressional Elections

- ???



- The **Sustaining Places Initiative** is a multi-year, multi-faceted program to define the role of planning in addressing all human settlement issues relating to sustainability.



Sustainability: the Defining Challenge of the 21st Century

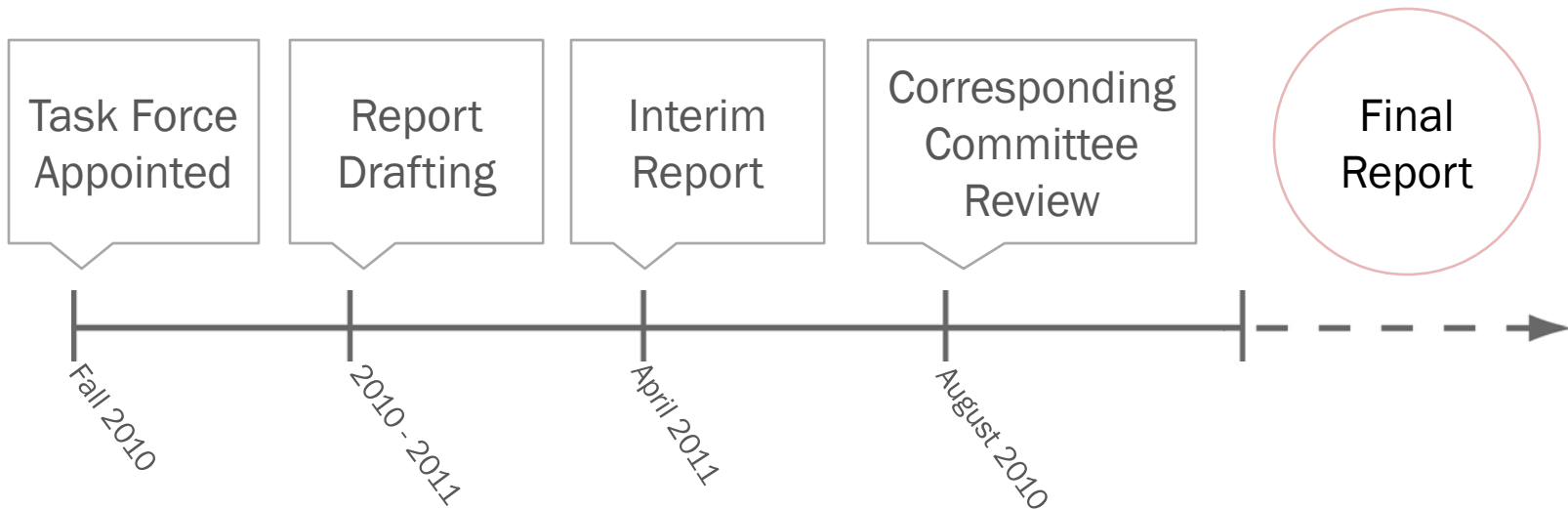
Issues

- Resource depletion
- Climate instability
- Energy production
- Economic stress
- Social inequity
- Community health



Members:

William Anderson, FAICP (Co-Chair)	David Godschalk, FAICP (Co-Chair)
Rudayna Abdo, AICP	Timothy Beatley
Kenneth Bowers, AICP	Stephen Hardy, AICP
Benjamin Herman, FAICP	Daniel Lerch
Ann McAfee	David Rouse, AICP
William Moomaw	Eric Shaw



Primary Charge:

Focus on the role of the *comprehensive plan* as the leading policy document and tool to help communities of all sizes achieve sustainable outcomes. Examine how plans effect change and are held accountable.

Secondary Charge:

Examine related changes in the *practice* of planning, including best practices that integrate sustainability into the comprehensive planning process.



Sustaining Places Defined

Planning for sustaining places is a dynamic, democratic process through which communities plan to meet the needs of current and future generations without compromising the ecosystems upon which we depend by balancing social, economic, and environmental resources, incorporating resiliency, and linking local actions to global and regional concerns.

Sustaining Places Task Force Interim Report, 2011



Eight Principles Derived from Best Practices

- Livable Built Environments
- Resilient Economy
- Healthy Community
- Authentic Participation
- Harmony with Nature
- Interwoven Equity
- Responsible Regionalism
- Accountable Implementation

	Health	Livability	Wellness	and Recreation	Community	Transportation
Stewardship	• Tree preservation and ecologically sound landscape design (LIV 10, 14)			• Environmental best management practices in parks and recreation areas (CPR 4)	• Collaboration with private citizens and organizations (HI 3, 4)	
Open Lands		• Connected system of open lands (Structure Map theme, LIV 23, 40, 41, 42, 45, 46) • Clustered residential development (LIV 27)	• Opportunities for recreation and active lifestyles (SW 2) • Food production (SW 3)	• Interconnected system of open lands (CPR 4) • Multi-purpose lands (CPR 5)	• Engagement and learning (HI 2, 3) • Forge partnerships and collaborate regionally (HI 4)	• Interface with open lands (T 4) • Connected system of trails (T 11)
Energy	• Innovation in clean energy industry cluster (EH 2)	• Energy conservation and efficiency in housing (LIV 9)	• Emergency management and the electric grid (SW 1)		• Engagement and learning (HI 2, 3) • Technological solutions (HI 6, 7)	• New vehicle types (T 17) • Transportation energy use impacts (T 30)
Air Quality		• Multiple means of travel to reduce vehicle miles traveled (Structure Map theme, LIV 21, 30, 35, 36, 37, 43, 44, 45) • Reduced carbon emissions (Structure Map theme)	• Enforcement of health ordinances (SW 2) • Emergency preparedness and weather events (SW 1)		• Engagement and learning (HI 2, 3) • Forge partnerships and collaborate regionally (HI 4)	• Transportation Demand Management to reduce vehicle miles traveled and improve air quality (T 3, 27, 30)
Climate					• Engagement and learning (HI 2, 3) • Forge partnerships and collaborate regionally (HI 4)	• Transportation Demand Management to reduce greenhouse gas emissions (T 27, 30)
Waste		• Adaptive reuse of historic structures (LIV 16, 17)	• Emergency management and hazardous materials (SW 1)		• Engagement and learning (HI 2, 3) • Forge partnerships and collaborate regionally (HI 4)	• Green streets (T 24)
Water Resources	• Encourage redevelopment by reducing stormwater infrastructure barriers (EH 4) • Innovation in water industry cluster (EH 2)	• Adequate public facilities with development (LIV 4) • Adequate public facilities with development (LIV 4) • Water efficiency and conservation	• Emergency management and flooding (SW 1)	• Multi-purpose lands (CPR 5) • Untreated water for irrigation in appropriate areas (CPR 4)	• Engagement and learning (HI 2, 3) • Forge partnerships and collaborate regionally (HI 4)	

Accountable Implementation

- Timeframes and responsibilities
- Departmental buy-in
- Coordination with capital program and operating budget
- Public and private sector partners / champions
- Metrics / indicators of success
- Public involvement
 - Measure progress and communicate results
 - Recognize milestones to maintain community support

Short Term Projects		Project Type	Applicable System Strategies	Lead Agency	Partnerships	Funding Source
ST-1	Create and implement neighborhood strategic plans	Planning / Program	HDC-1, HDC-2, HDC-3, HDC-4, HDC-5, HDC-6, HDC-7, HDC-8, HDC-9, NI-1, NI-2, NI-3, NI-4, NS-1, NS-2, NS-3, NS-4, NS-5, NS-6, NS-7	Albany Dept. of Development and Planning	CDRPC, SUNY, neighborhood associations	Existing funding
ST-2	Prepare a comprehensive	Regulatory	LU-2, LU-3, UD-1, ARCH-1, ARCH-2.	Albany Dept. of Develop-	Neighborhood associations, Mayor's Office of	NYS Community Development

Scorecard for Union County, PA Comprehensive Plan: *Cultivating Community*

	Low	Moderate	High
Livable Built Environment			x
Harmony With Nature			x
Resilient Economy			x
Interwoven Equity		x	
Healthy Community			x
Responsible Regionalism		x	
Authentic Participation			x
Accountable Implementation			x



Location: Central Pennsylvania

Governmental Structure: County Planning Commission; municipalities have land use regulatory authority

Population: 43,640 (2008 Census Estimate)

Largest Municipality: Lewisburg (population 5,454)

Year Plan Adopted: 2009

Scorecard for Philadelphia 2035 Comprehensive Plan

	Low	Moderate	High
Livable Built Environment			x
Harmony With Nature			x
Resilient Economy			x
Interwoven Equity			x
Healthy Community			x
Responsible Regionalism			x
Authentic Participation			x
Accountable Implementation			x



Location: Population and economic center of a 12-county (four-states) MSA.


Governmental Structure: Home Rule Charter, governed by an elected City council, with the Philadelphia City Planning Commission (PCPC) given main responsibility to prepare and implement the citywide plan; Outreach and education provided through the PCPC's City Planning Institute.

Population: 1.55 million in the city in 2010 (6.35 million in the greater Philadelphia area)

Year Plan Adopted: 2011

Sustaining Places: The Role of the Comprehensive Plan

American Planning Association – Sustaining Places Task Force Report




American Planning Association

[About APA](#)
[Membership](#)
[Events](#)
[Education](#)
[Outreach](#)
[Resources](#)
[Jobs & Practice](#)
[APAPanningBooks.com](#)

Community


- Community Assistance Program
- Katrina / Gulf Coast Recovery
- National Community Planning Month
- Great Places in America
- Economic Development
- City Parks Forum

Sustaining Places Initiative



SUSTAIN

The Sustaining Places Initiative is a multi-year, multi-faceted program to define the role of planning in addressing all human settlement issues relating to sustainability.



For leaders in

Stay tuned! *Sustaining Places: The Role of the Comprehensive Plan* will be released as a PAS Report in January 2012.

Current Initiatives in Sustainable Communities Planning

APA Pennsylvania Chapter Annual Conference
October 18, 2011

David Rouse, AICP, Principal

Wallace Roberts & Todd

www.wrtdesign.com

215-772-1465

drouse@ph.wrtdesign.com

